

MAXIMO Bracket System MXK

The flexible working platform solution with lightweight brackets

Product Brochure – Issue 02/2019



Content

System Advantages		System Overview	
4	The flexible working platform solution with lightweight brackets	10	The MAXIMO Bracket System MXK at a glance
6	Modular design		
8	Safe application		
9	Easy installation		
		12	Standard Applications Length compensations as well as internal and external corners

Issue 02/2019

Publisher

PERI GmbH
Formwork Scaffolding Engineering
Rudolf-Diesel-Strasse 19
89264 Weissenhorn
Germany
info@peri.com
www.peri.com

Components

14 MAXIMO Bracket System MXK

Important information

All current safety regulations and guidelines applicable in those countries where our products are used must be observed.

The photos shown in this brochure feature construction sites in progress. For this reason, safety and anchor details in particular cannot always be considered as conclusive or final. These are subject to the risk assessment carried out by the contractor.

In addition, computer graphics are used, which are to be understood as system representations. To ensure a better understanding, these and the detailed illustrations shown have been partially

reduced to focus on certain aspects. Some safety installations may not have been shown in these detailed descriptions but must nevertheless still be available. The systems or items shown might not be available in every country.

Safety instructions and load specifications are to be strictly observed at all times. Separate structural calculations are required for any deviations from the standard design data.

The information contained herein is subject to technical changes in the interests of progress. Errors and typographical mistakes reserved.



MAXIMO Bracket System MXK

The flexible working platform solution with lightweight brackets

The MXK Bracket System is used to realise safe and comfortable working platforms on MAXIMO and TRIO Panel Formwork. Unlike conventional solutions, the MXK Bracket System consists of combinable system components, which can be manually pre-assembled on the formwork element whilst on the ground.

Standard assemblies of the MXK Bracket System are realised with widths of 2.40 m, 1.20 m or 0.90 m – adapted to match the dimensions of the MAXIMO and TRIO panel formwork elements. The working platforms are mounted on the element of the corresponding width and also remain attached to the formwork during temporary storage.

In contrast to conventional solutions, the MXK has a modular design: the most important system component is the bracket; it can be completed with different types of decking and PROKIT Side Mesh Barriers to form a working platform. Alternatively, wooden planks can be used as decking or wooden boards for side protection.

The supplementary system components, such as decks with access hatches, ladder access, system solutions for internal and external corners, as well as length compensations, ensure a consistently reliable solution in all areas.

Modular design

Individual assembly depending on requirements thanks to combinable system components

Safe application

High level of safety through the use of lightweight system components and assembly by hand on the ground

Easy installation

Once mounted the core components remain on the formwork even during temporary storage

Modular design

Individual assembly depending on requirements thanks to combinable system components



MXK Scaffold Decks are available as both wood and steel versions - both variants in different lengths as well as with access hatches.



Water, snow and ice are barely able to accumulate on the alternative steel decking.

The MXK Bracket System allows different combinations for realisation of the platforms. Thus, for example, system decking with wooden or steel variants; as an option, wooden planks can be attached to the brackets. This modularity provides a high level of flexibility for adapting the system to suit the respective jobsite requirements.

The working platforms are realised using a minimum of lightweight system components. The most important element is the MXK Scaffold Bracket, which is mounted on the MAXIMO or TRIO panel formwork, and serves as a support for the decking. The brackets can be used with different system components and with conventional timber solutions - according to the exact requirements or availability of materials at the jobsite.

Combination options for assembly of the platform system

Design variants for the scaffold brackets

- Scaffold brackets with or without push-pull prop connections

Design variants for the decking

- One-piece system deck with coated wood or steel grating; also available with an access hatch
- Decking consisting of wooden planks

Design variants for the side protection

- One-piece side protection with PROKIT Side Mesh Barriers
- Multiple-part side protection with wooden handrail boards

Optional supplements and variants

- Use of end guardrails on leading edges
- Use of compensation decks in the corners and for length compensations

Core components for the standard solution



The MXK Scaffold Bracket is attached to the struts of the panel formwork; it serves as a support for the MXK Scaffold Decks. Alternatively, wooden planks can be nailed in from above or screwed in from below.



In addition, the MXK-RS Scaffold Bracket provides the possibility of connecting a push-pull prop directly to the bracket. With extended elements, it must be ensured that the push-pull props do not adversely affect the working area on the platform.



With lengths of 240 cm, 120 cm and 90 cm, the MXK Scaffold Deck can be adapted to suit the element widths of the MAXIMO and TRIO panel formwork. The 240-cm-long decking is also available with an access hatch.



The PERI MXK Guardrail Post can be used with the Side Mesh Barrier PMB or handrail boards. The securing device at the base fixes the post in the bracket; in addition, toe board holders are integrated.



The one-piece Side Mesh Barrier PMB secures the working platform parallel to the formwork and is quickly installed. The available lengths match the MXK Scaffold Decks. Alternatively, the Side Mesh Barrier PMB can also be used with PROKIT system components to secure open slab edges.



The MXK Stoperail with integrated toe board secures the open edge of the working platform transversely to the panel formwork. It can be swivelled in both directions by 90° so that access to the next working platform is possible.

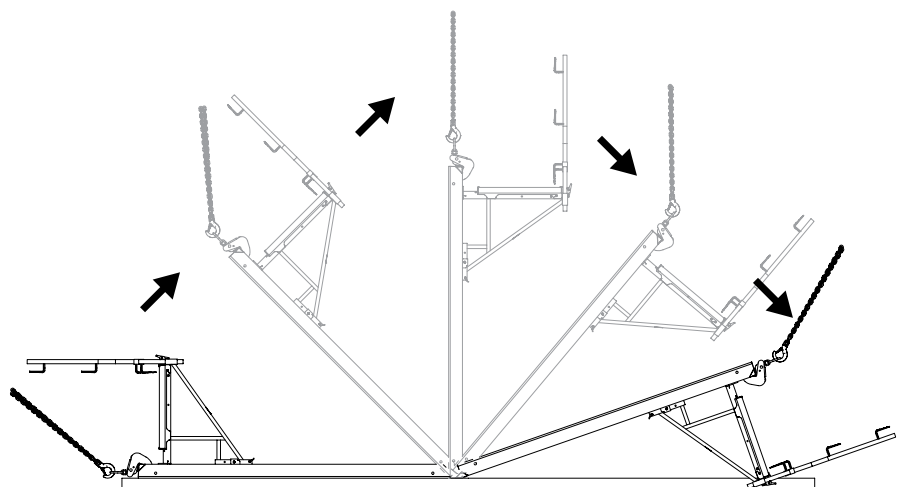
Safe application

High level of safety through the use of lightweight system components and assembly by hand on the ground

The bracket system is mounted to the elements of the MAXIMO or TRIO panel formwork horizontally on the ground. The required system components are very light and can be handled without the use of a crane.

The core components of the bracket system are lightweight and can therefore be easily mounted without using a crane. Very few different system components are required for the standard configuration. After mounting the brackets to the panel formwork, the selected decking variant is installed. This is particularly quick when using the one-piece scaffold decking, as this is easily connected and hooked into a bolt.

The proven PERI Guardrail Posts with PROKIT Side Mesh Barriers or handrail boards secure the open edge of the working platform. The corresponding stopend rails complete the working platform if required.



If the MXK Bracket System is mounted on the end of the top element, the formwork element is placed on the bracket system after mounting the guardrail post. Then the guardrails are installed. This ensures that the guardrail is not subject to being loaded by the crane chain.

Easy installation

Once mounted the core components remain on the formwork even during temporary storage



For temporary storage or when cleaning the elements, the formwork is laid down on the MXK Bracket System.

In order to keep the installation effort on the construction site as low as possible, the MXK Bracket System was designed so that the formwork can be put down on the platforms. The bracket system remains on the element after one-time assembly and is removed only when the MAXIMO or TRIO elements are stacked.

After positioning the formwork element on its rear, the formlining can easily be cleaned on the ground. This increases the working comfort and safety even further.



The formwork element can be laid down on its rear together with the mounted MXK Bracket System.

The MAXIMO Bracket System MXK at a glance





The following pages describe standard applications of the bracket system.

The explanations show important basic principles but do not make any claims regarding completeness.

All detailed specifications as well as any possible country-specific data can be found in the Instructions for Assembly and Use. Furthermore, the corresponding Instructions for Use must also be observed.

Length compensations as well as internal and external corners

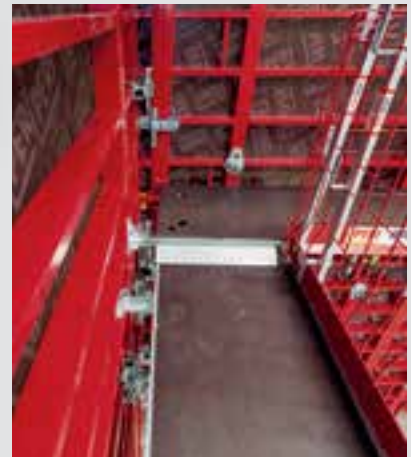
Length compensation with the compensation deck

The Compensation Deck long MXK is used for length compensations of up to 160 cm. The compensation deck is placed by crane on the available scaffolding platforms and adjusted centrally. The result is a trip-free, end-to-end safe decking surface.



Execution of internal and external corners

On the internal corner, an internal corner adapter serves as a support for the compensation element.



The MXK External Corner Deck is mounted on the MXK Scaffold Bracket. Assembly takes place on a horizontally-positioned element.





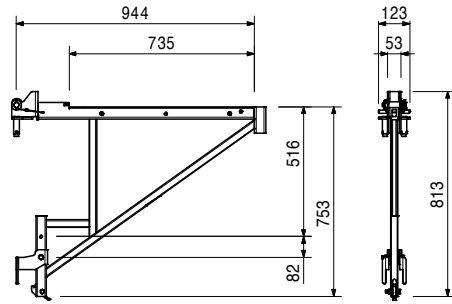
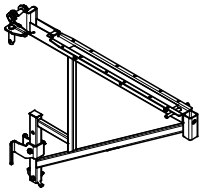
MAXIMO Console Bracket MXK



Item no.	Weight kg
126356	10.200

Scaffold Bracket MXK

For assembly of a working and concreting scaffold with MAXIMO and TRIO.



Accessories

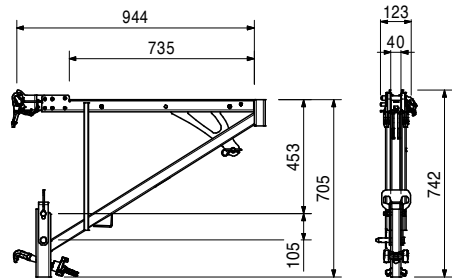
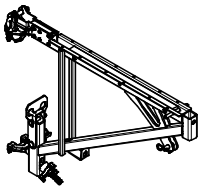
126360	4.920
--------	-------

Guardrail Post MXK

126540	14.600
--------	--------

Scaffold Bracket MXK-RS

For assembly of a working and concreting scaffold with MAXIMO and TRIO.



Accessories

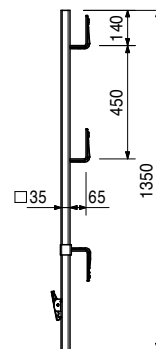
126360	4.920
--------	-------

Guardrail Post MXK

126360	4.920
--------	-------

Guardrail Post MXK

As guardrail for MAXIMO and TRIO.



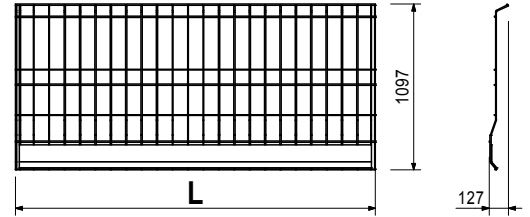
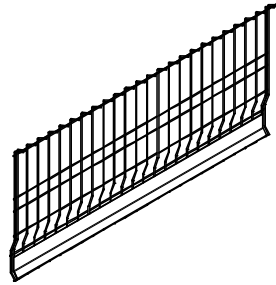
MAXIMO Console Bracket MXK



Item no.	Weight kg
126371	17.700
126376	9.260
126381	7.140

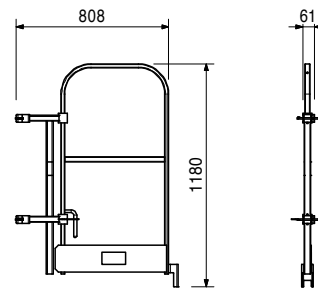
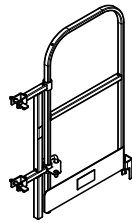
Side Mesh Barriers PMB
Side Mesh Barrier PMB 240
Side Mesh Barrier PMB 120
Side Mesh Barrier PMB 90

L
2400
1180
900



126357	13.800
--------	--------

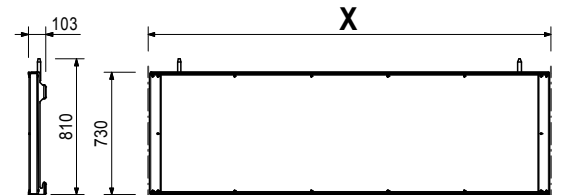
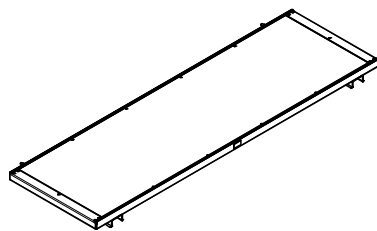
Stopend Rail MXK
 As end handrail for Bracket System MXK.



126463	24.600
125693	15.400
126927	13.400

Scaffold Decks MXK
Scaffold Deck MXK 240
Scaffold Deck MXK 120
Scaffold Deck MXK 90
 Scaffold Deck for Bracket System MXK.

X
2400
1200
900

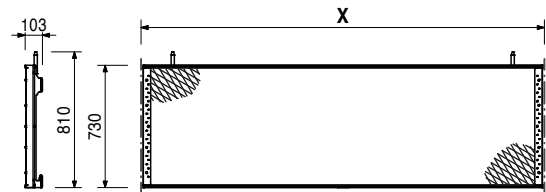
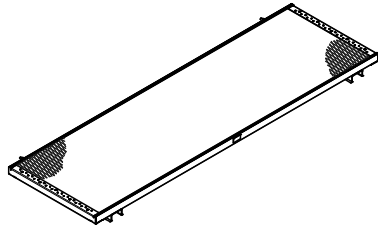


MAXIMO Console Bracket MXK

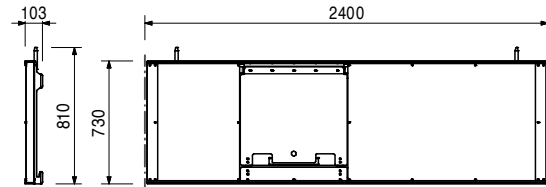
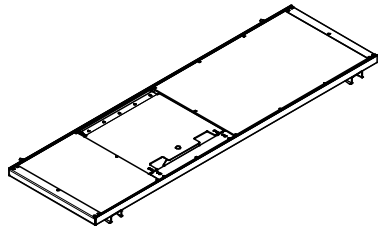


Item no.	Weight kg		X
128310	31.400	Scaffold Deck MXK, steel	2400
128311	19.000	Scaffold Deck MXK 240, steel	1200
128312	16.000	Scaffold Deck MXK 90, steel	900

Scaffold Deck for Bracket System MXK.



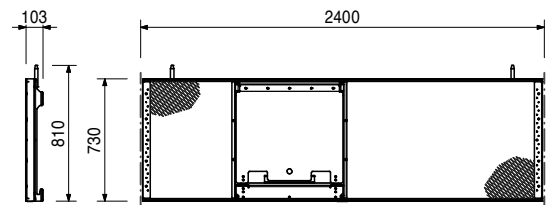
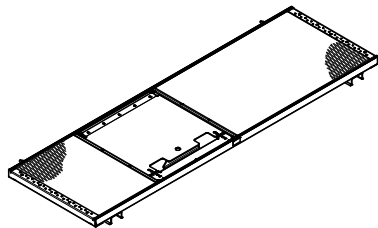
128740	33.400	Scaffold Deck MXK 240 with Hatch For assembly of a working and concreting scaffold including ladder with MAXIMO and TRIO.	
--------	--------	---	--



Accessories

115915	12.200	Ladder MXP 270	
114871	4.900	Ladder RFP 90	
128406	7.230	Ladder Connector MXK	

128812	40.000	Scaffold Deck MXK 240, steel with hatch For assembly of a working and concreting scaffold including ladder with MAXIMO and TRIO.	
--------	--------	--	--



Accessories

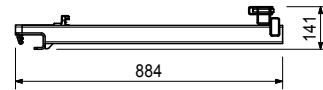
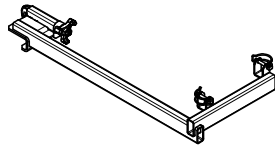
115915	12.200	Ladder MXP 270	
114871	4.900	Ladder RFP 90	
128406	7.230	Ladder Connector MXK	

MAXIMO Console Bracket MXK

Item no.	Weight kg
128406	7.230

Ladder Connector MXK

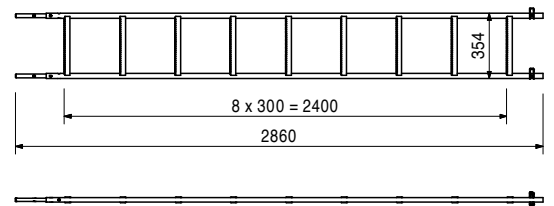
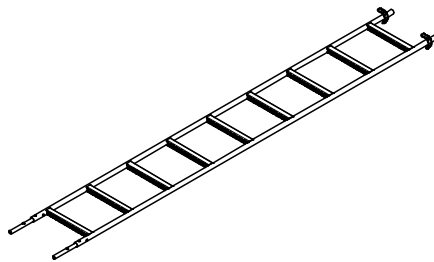
For assembling of a Ladder MXK to MAXIMO and TRIO Panels.



115915	12.200
--------	--------

Ladder MXP 270

For Platforms MXK 240 with Hatch.



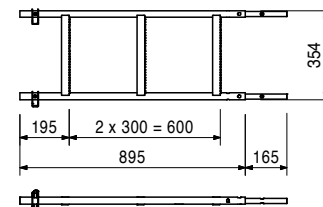
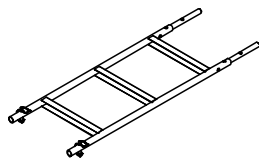
114871	4.900
114870	8.540

Ladder RFP

Ladder RFP 90

Ladder RFP 180

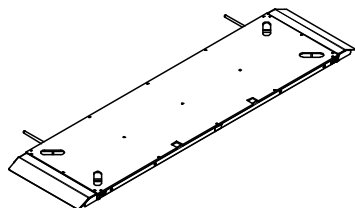
As access for Platform Systems RFP.



126541	32.400
--------	--------

Compensation Deck long MXK

For closing gaps between Scaffold Decks MXK.



128941	0.364
128829	1.340

Accessories

Lift Lock MXK

Inside Corner Post Holder MXK

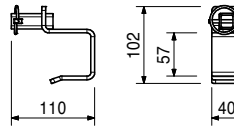
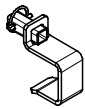
MAXIMO Console Bracket MXK



Item no.	Weight kg
128941	0.364

Lift Lock MXK

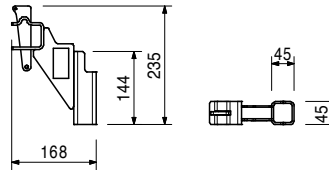
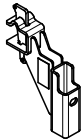
For fixing Lift Lock MXK to Scaffold Decks MXK.



128829	1.340
--------	-------

Inside Corner Post Holder MXK

For fixing of an additional Guardrail Post MXK to Compensation Deck MXK.



Accessories

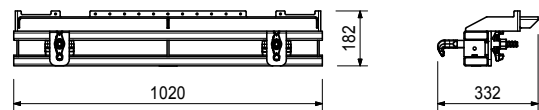
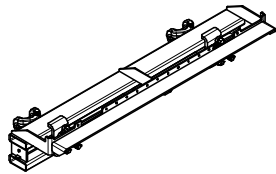
126360	4.920
--------	-------

Guardrail Post MXK

128900	20.500
--------	--------

Internal Corner Adapter-MAR MXK

For supporting an internal corner platform.



Accessories

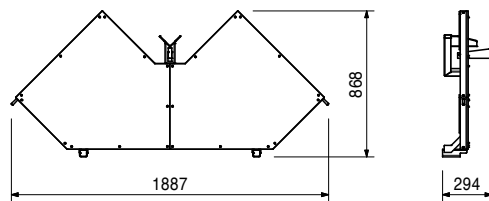
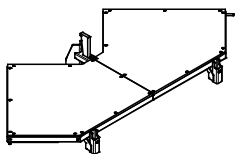
126541	32.400
--------	--------

Compensation Deck long MXK

126545	25.900
--------	--------

External Corner Deck MXK

For assembly of a working platform to the external corner.



Accessories

126360	4.920
--------	-------

Guardrail Post MXK

MAXIMO Console Bracket MXK

Item no.	Weight kg
123960	70.400

Pallet EP 110

For stacking and transportation of 25 Side-Mesh-
Barriers PMB.

Complete with

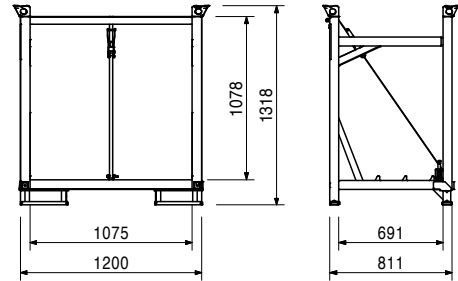
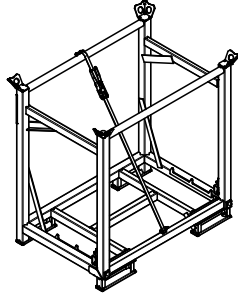
1 pc. 117560 Lashing 25 x 2550 mm

Note

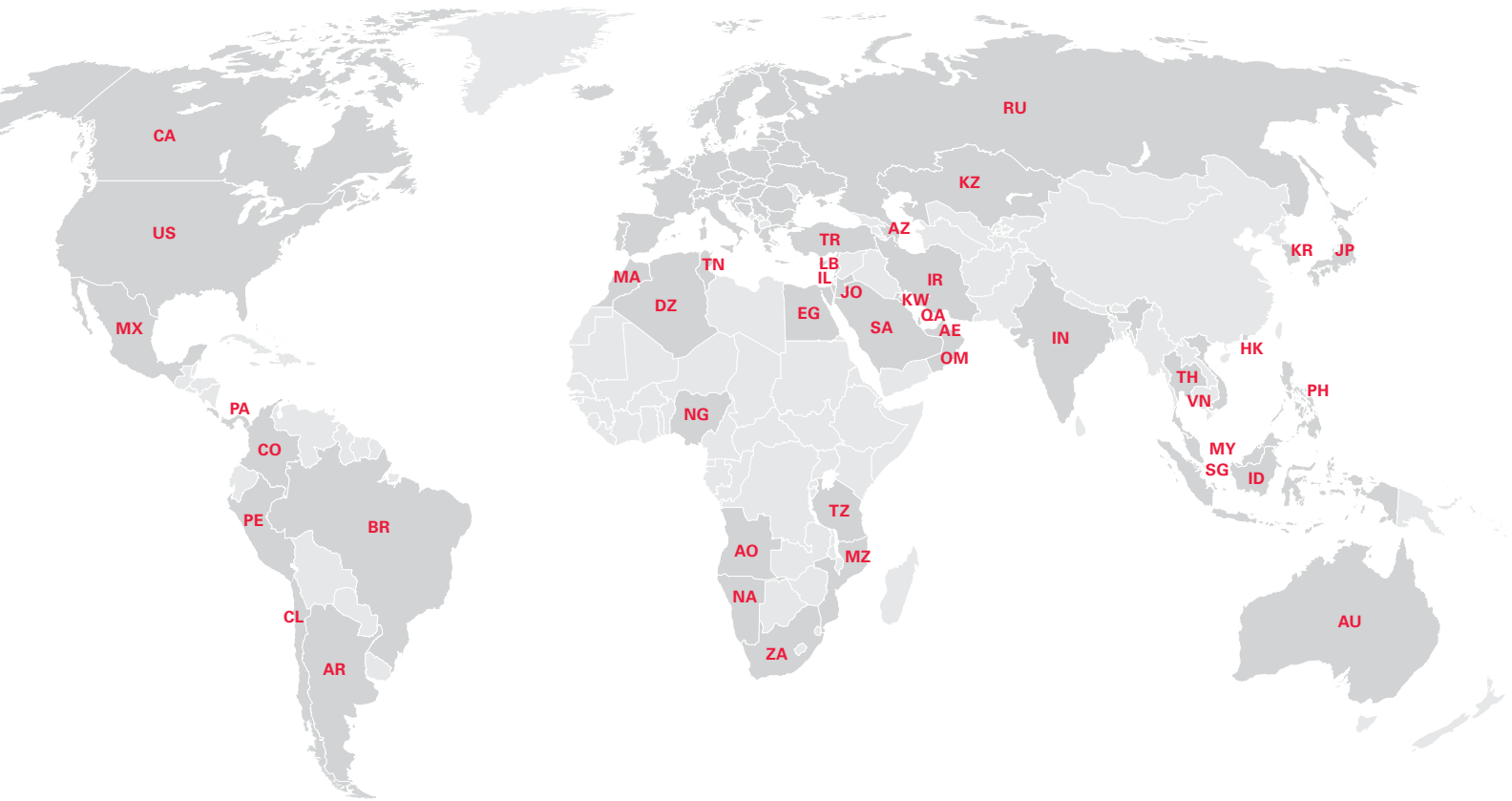
Follow Instructions for Use!

Technical Data

Permissible load-bearing capacity 600 kg.



PERI International



North America

- CA** Canada
PERI Formwork Systems, Inc.
www.peri.ca
- MX** Mexico
PERI Cimbras y Andamios, S.A. de C.V.
www.peri.com.mx
- PA** Panama
PERI Panama Inc.
www.peri.com.pa
- US** USA
PERI Formwork Systems, Inc.
www.peri-usa.com

South America

- AR** Argentina
PERI S.A.
www.peri.com.ar
- BR** Brazil
PERI Formas e Escoramentos Ltda.
www.peribrasil.com.br
- CL** Chile
PERI Chile Ltda.
www.peri.cl
- CO** Colombia
PERI S.A.S.
www.peri.com.co
- PE** Peru
PERI Peruana S.A.C.
www.peri.com.pe

Africa

- AO** Angola
Pericofragens, Lda.
www.peri.pt
- DZ** Algeria
S.A.R.L. PERI
www.peri.dz
- EG** Egypt
Egypt Branch Office
www.peri.com.eg
- MA** Morocco
PERI S.A.
www.peri.ma
- MZ** Mozambique
PERI (Pty.) Ltd.
www.peri.co.mz
- NA** Namibia
PERI (Pty.) Ltd.
www.peri.na
- NG** Nigeria
PERI Nigeria Ltd.
www.peri.ng
- TN** Tunisia
PERI S.A.U.
www.peri.es
- TZ** Tanzania
PERI Formwork and Scaffolding Ltd
www.peri.co.tz
- ZA** South Africa
PERI Formwork Scaffolding (Pty) Ltd
www.peri.co.za

Asia

- AE** United Arab Emirates
PERI (L.L.C.)
www.peri.ae
- AZ** Azerbaijan
PERI Representative Office
www.peri.com.tr
- HK** Hong Kong
PERI (Hong Kong) Limited
www.perihk.com
- ID** Indonesia
PT Beton Perkasa Wijaksana
www.betonperkasa.com
- IL** Israel
PERI F.E. Ltd.
www.peri.co.il
- IN** India
PERI (India) Pvt Ltd
www.peri.in
- IR** Iran
PERI Pars. Ltd.
www.peri.ir
- JO** Jordan
PERI GmbH – Jordan
www.peri.com
- JP** Japan
PERI Japan K.K.
www.peri.co.jp
- KR** Korea
PERI (Korea) Ltd.
www.perikorea.com
- KW** Kuwait
PERI Kuwait W.L.L.
www.peri.com.kw
- KZ** Kazakhstan
TOO PERI Kazakhstan
www.peri.kz
- LB** Lebanon
PERI Lebanon Sarl
lebanon@peri.de
- MY** Malaysia
PERI Formwork Malaysia Sdn. Bhd.
www.perimalaysia.com
- OM** Oman
PERI (L.L.C.)
www.peri.ae
- PH** Philippines
PERI-Asia Philippines, INC.
www.peri.com.ph
- QA** Qatar
PERI Qatar LLC
www.peri.qa
- SA** Saudi Arabia
PERI Saudi Arabia Ltd.
www.peri.com.sa
- SG** Singapore
PERI Asia Pte Ltd
www.periasia.com
- TH** Thailand
Peri (Thailand) Co., Ltd.
www.peri.co.th
- TR** Turkey
PERI Kalıp ve İskeleleri
www.peri.com.tr
- VN** Vietnam
PERI ASIA PTE LTD
www.peri.com.vn



PERI

**PERI GmbH
Formwork Scaffolding Engineering**

Rudolf-Diesel-Strasse 19
89264 Weissenhorn
Germany
Tel. +49 (0)7309.950-0
Fax +49 (0)7309.951-0
info@peri.com
www.peri.com

Oceania

AU Australia
PERI Australia Pty. Ltd.
www.periaus.com.au

DK Denmark
PERI Danmark A/S
www.peri.dk

IT Italy
PERI S.r.l.
www.peri.it

SE Sweden
PERI Sverige AB
www.peri.se

Europe

EE Estonia
PERI AS
www.peri.ee

LT Lithuania
PERI UAB
www.peri.lt

SI Slovenia
PERI oplate i skele d.o.o
www.peri.com.hr

AL Albania
PERI Kalıp ve İskeleleri
www.peri.com.tr

ES Spain
PERI S.A.U.
www.peri.es

LU Luxembourg
N.V. PERI S.A.
www.peri.lu

SK Slovakia
PERI spol. s. r.o.
www.peri.sk

AT Austria
PERI Ges.mbh
www.peri.at

FI Finland
PERI Suomi Ltd. Oy
www.perisuomi.fi

LV Latvia
PERI SIA
www.peri-latvija.lv

UA Ukraine
TOW PERI
www.peri.ua

BA Bosnia and Herzegovina
PERI oplate i skele d.o.o
www.peri.com.hr

FR France
PERI S.A.S.
www.peri.fr

NL Netherlands
PERI b.v.
www.peri.nl

BE Belgium
PERI N.V.
www.peri.be

GB United Kingdom
PERI Ltd.
www.peri.ltd.uk

NO Norway
PERI Norge AS
www.peri.no

BG Bulgaria
PERI Bulgaria EOOD
www.peri.bg

GR Greece
PERI Hellas Ltd.
www.perihellas.gr

PL Poland
PERI Polska Sp. z o.o.
www.peri.com.pl

BY Belorussia
IOOO PERI
www.peri.by

HR Croatia
PERI oplate i skele d.o.o.
www.peri.com.hr

PT Portugal
Pericofragens Lda.
www.peri.pt

CH Switzerland
PERI AG
www.peri.ch

HU Hungary
PERI Kft.
www.peri.hu

RO Romania
PERI România SRL
www.peri.ro

CZ Czech Republic
PERI spol. s r.o.
www.peri.cz

IR Ireland
Siteserv Access & Formwork
www.siteservaccess.ie

RS Serbia
PERI oplate d.o.o.
www.peri.rs

DE Germany
PERI GmbH
www.peri.de

IS Iceland
Armar ehf.
www.armor.is

RU Russia
OOO PERI
www.peri.ru

**The optimal System
for every Project and
every Requirement**



Wall Formwork



Column Formwork



Slab Formwork



Climbing Systems



Bridge Formwork



Tunnel Formwork



Shoring Systems



Construction Scaffold



Facade Scaffold



Industrial Scaffold



Access



Protection Scaffold



Safety Systems



**System-Independent
Accessories**



Services



PERI GmbH
Formwork Scaffolding Engineering
 Rudolf-Diesel-Strasse 19
 89264 Weissenhorn
 Germany
 Tel. +49 (0)7309.950-0
 Fax +49 (0)7309.951-0
 info@peri.com
 www.peri.com

